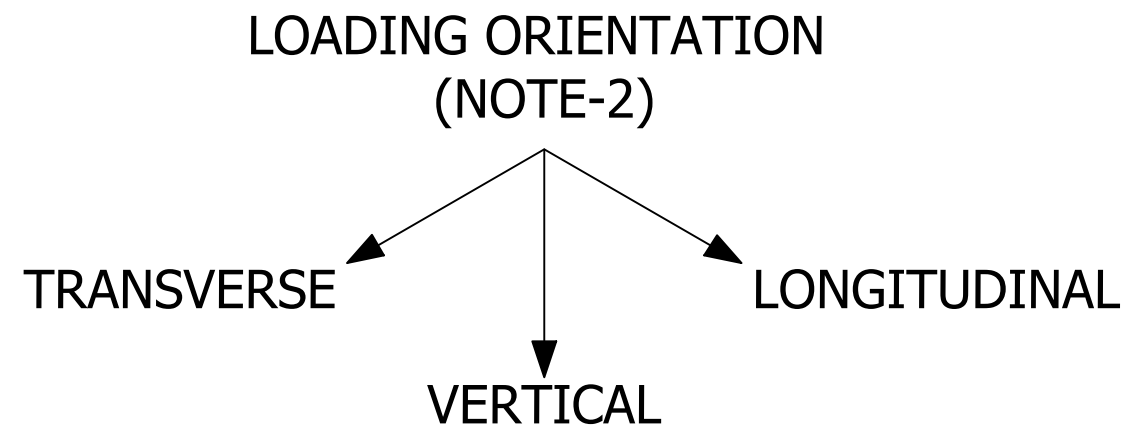
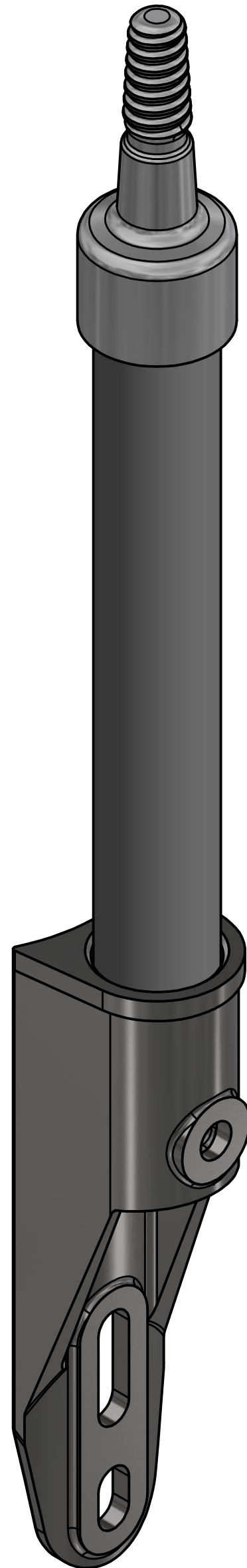


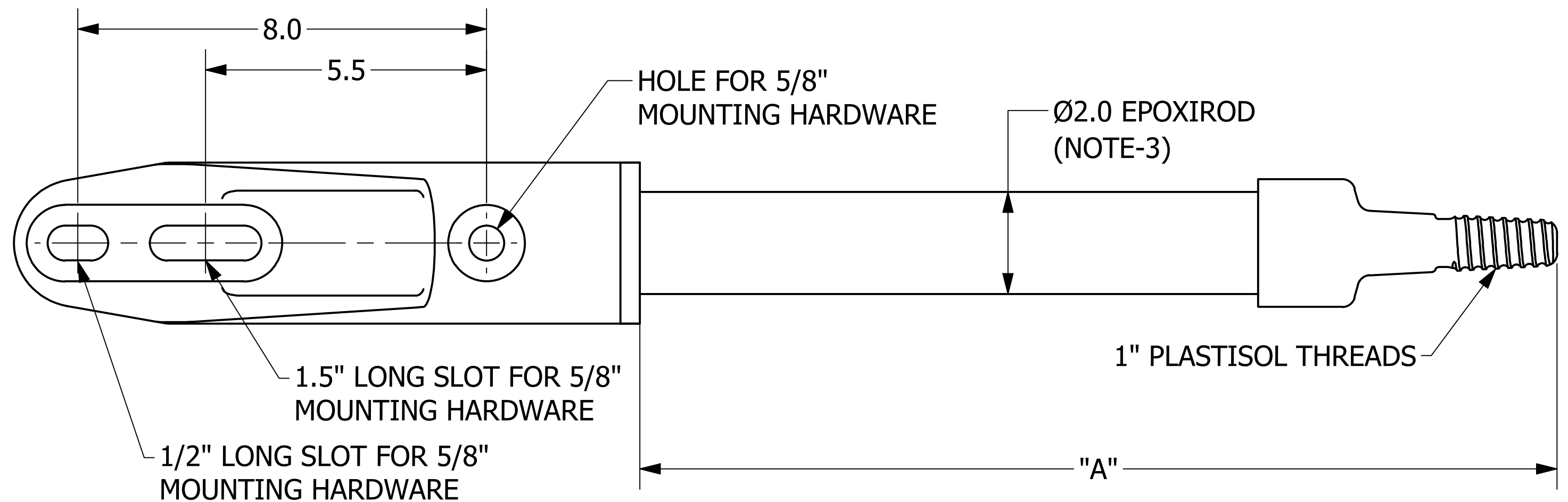
-NOTES-



1. MATERIAL:  
BASE: GALVANIZED DUCTILE IRON  
END FITTING: CAST ALUMINUM
2. RECOMMENDED MAXIMUM WORKING LOAD IS 50% OF THE ULTIMATE RATING LISTED.
3. FOR SILICONE COATED ROD ADD "SC" SUFFIX TO THE END OF THE CATALOG NUMBER (EX. RPH121**SC**)



CATALOG NUMBER	"A"	ULTIMATE STRENGTH (LBS)		
		VERTICAL	LONGITUDINAL	TRANSVERSE
RPH121	12"	2500	2200	2200
RPH181	18"	2500	2150	2150
RPH211	21"	2500	2000	2000
RPH241	24"	2500	1750	1750
RPH271	27"	2500	1500	1500
RPH301	30"	2500	1300	1300
RPH361	36"	2500	1100	1100



<b>CHANCE</b> <sup>®</sup> <small>CONFIDENTIAL: THIS DRAWING AND ITS CONTENTS ARE CONFIDENTIAL AND THE EXCLUSIVE PROPERTY OF HUBBELL POWER SYSTEMS. NO PUBLICATION, DISTRIBUTION, OR COPIES MAY BE MADE WITHOUT THE WRITTEN CONSENT OF HUBBELL POWER SYSTEMS. HUBBELL POWER SYSTEMS UNPUBLISHED ALL RIGHTS RESERVED UNDER THE COPYRIGHT LAWS.</small>	HUBBELL POWER SYSTEMS, INC. <small>POWER SYSTEMS, INC.</small>		
	TITLE <b>RIDGE PIN PLASTISOL THREADS</b>		
SIZE <b>C</b>	CAT / PART / ASSY NO. <b>SEE CHART</b>	DWG NO. <b>SARPHXX1</b>	REV <b>A</b>
<small>DO NOT SCALE THIS DRAWING</small>	<small>DRN BY HOEK</small>	<small>DATE 10/4/22</small>	<small>SHEET 1 OF 1</small>